



"My Passion is to challenge the realities and certainties , and imagine appropriate solutions for every single patient "

Dr. Skander ELLOUZE DDS - MS - PHD

Dr Skander Ellouze runs a private practice in Tunis (Tunisia) that specialises in the use of advanced technologies such as Passive self-ligation, lingual orthodontic, and clear aligners, and the use of cutting edge technologies such as CT SCAN, intra oral scan, and other digital imaging to produce aesthetic and efficient customized solutions for his patients. Dr Ellouze is recognized as a leader in the field of Lingual orthodontics, passive self-ligation, and skeletal anchorage systems (TADs). He lectures frequently internationally. He is conducting the master in lingual Orthodontics at the University Of Valencia (Spain) , and is an associate Professor in the department of orthodontics at the University of Bordeaux 2. Dr. Ellouze has written several articles, and recently published a book titled: Mini-Implants: Orthodontics for the future (Quintessence International French & English)

Dr Ellouze has received his Degree in Dental Surgery from the Faculty of Monastir (TUNISIA) and completed his Post-Graduate Certificate in Orthodontics at the University of Bordeaux (C.E.C.S.M.O - France) and has been Post-Graduated in Lingual Orthodontics at the University of Paris V.

Dr Ellouze has received his Degree in Dental Surgery from the Faculty of Monastir (TUNISIA) and completed his Post-Graduate Certificate in Orthodontics at the University of Bordeaux (C.E.C.S.M.O - France) and has been Post-Graduated in Lingual Orthodontics at the University of Paris V.

Dr Ellouze has received his Degree in Dental Surgery from the Faculty of Monastir (TUNISIA) and completed his Post-Graduate Certificate in Orthodontics at the University of Bordeaux (C.E.C.S.M.O - France) and has been Post-Graduated in Lingual Orthodontics at the University of Paris V.

DAY - I

08:30 Registration

09:00 Course Part I Damon System

11:00 Coffee Break

11:30 Course Part II Damon Cases Treatment

13:00 Lunch Break

14:30 Course Part II Class II Malocclusions High Angel Cases

15:30 Coffee Break

16:00 Course Part IV A New Approach of Damon Treatments Combining TAD, S

17:30 End Of Course

DAY - II

09:00 Course Part I Mini Screw Technique

10:00 Workshop on TAD, S

11:00 Coffee Break

11:30 General Conclusions

13:00 End Of Course

DAMON®SYSTEM
More than straight teeth™

VectorTAS™
TEMPORARY ANCHORAGE SYSTEM

Ormco™ Your Practice. Our Priority.

When and How to Optimize Damon Mechanics with Tad's ?

By Dr Skander ELLOUZE

DMS
DENTAL MEDICAL
SUPPLIES



Download our mobile app :



Ormco education

Ormco education

www.ormco.eu
www.dms-leb.com

BEIRUT - 5 and 6 December / 2017

DAMON SYSTEM & MINI-SCREWS

- OPTIMIZED MECHANICS
- SOPHISTICATED SIMPLICITY
- SPECTACULAR RESULTS

Through real clinical situations, Dr ELLOUZE will explain his approach Of Diagnosis and treatment planning that combines the dynamic Damon System with non-complicated protocols using TAD's.

Dr Ellouze will present step by step numerous well documented cases, and will reveal essential tips that will help you master this efficient and simplified mechanics, solve challenging issues, and start every treatment with much more serenity.

Main Topics :

- How to Extract Less and yet respect bone and tissues !
- How to optimize the mandibular response in Retrognathic class II's
- Can Mini Implants Help in class III treatments!
- Asymmetrical cases: Change the game with TAD's
- And more ...



Non extraction Treatment of a Bi-alveolar protrusion:

Molars are Distalized to their center of resistance Using Palatal Mini-screws



Non Extraction Treatment in a Full Dental Class II & Gummy smile (growing patient)



En Masse Retraction using 2 Maxillary Mini-Implants



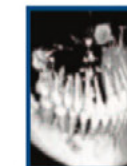
Upper Incisors Intrusion and Molar Vertical Control using the same screws

Miniscrew mechanics for Orthognathic Treatment effects



Class II, High Angle:

Spectacular Counterclockwise mandibular rotation not only in growing patients, But also in adults.



Class III malocclusion:

Phenomenal Orthognathic effect
Unilateral Anterior Mini-screw to correct a severe asymmetry

For any information or registration,
Please Contact: Mrs Carla Dahdah

phone : 00961 3 155731

Office : 00961 1 240 444

Email : dms@dms-leb.com



Location

Radisson BLU Hotel - Beirut

Phoenicia ST, Ain El Mreysseh